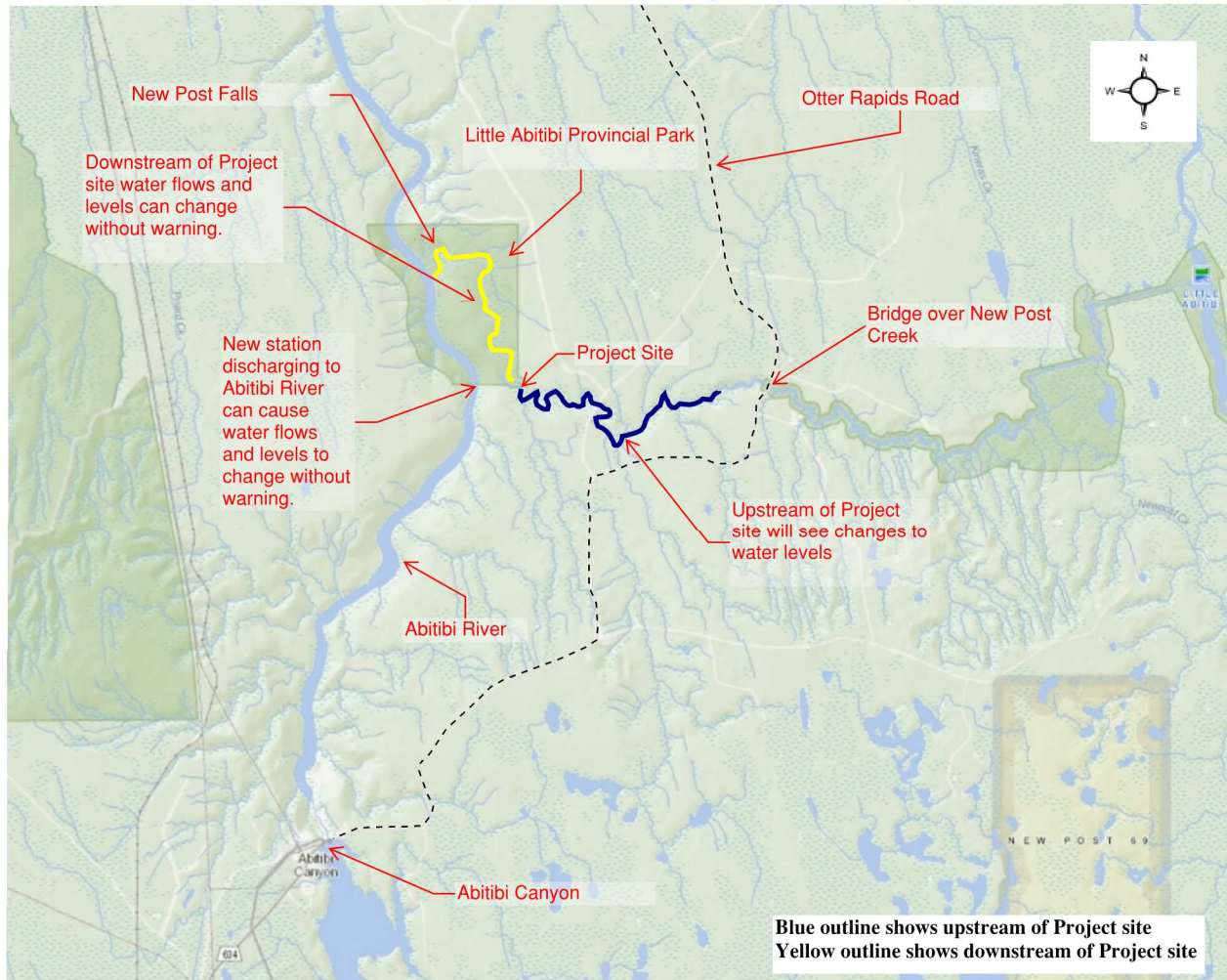




Public Notice Water Safety - New Post Creek Hydroelectric Project



**Kiewit Aecon New Post a Partnership (KANPP)
Design-Build Contractor – New Post Creek Hydroelectric Project**

KANPP advises the public that there will be changes to water levels and flows in New Post Creek and the Abitibi River due to construction and testing of the new Peter Sutherland Senior Generating Station and dams. The process is scheduled from January 2017 until April 2017.

As a result, frequent, rapid and potentially dangerous changes in water levels and flows are possible in the following areas :

- New Post Creek upstream of Project site to the Otter Rapids Road.
- New Post Creek downstream of Project site in the Little Abitibi Provincial Park.
- Immediately above and below New Post Falls and its connection to the Abitibi River.
- Section of the Abitibi River receiving the generating station discharge.

In order to ensure your safety, please stay back from edges and steep slopes of water above and below the Project site. These areas may become slippery and unstable. Exposed areas can also become submerged, and ice formation may be thin due to unseen currents. Please obey all signs and stay clear from control measures such as safety booms and buoys. The attached map explains the impacts in greater detail.

The new station and dams were assessed under the provincial Environmental Assessment (EA) Act and was subject to the Class EA for Waterpower Projects.

Thank you for your cooperation in helping us complete this operation safely and successfully. If you have any questions, please contact:

Kerry Pike
Project Environmental Manager
905 337 4000 ext 4737

kerry.pike@kiewit.com

