

---

# ***Community Emergency Pandemic Plan***

## **H1N1 Influenza**

*Approved by Moose Cree First Nation Chief & Council - October 27, 2009*

---

### **Moose Factory Island**

- Moose Cree First Nation
- Local Services of Moose Factory
- MoCreebec Council of the Cree Nation

## Table of Contents

Section:		Page:
1.0	Preamble	2
1.1	Purpose	3
1.2	Objectives	3
1.3	Definitions	3
2.0	Local Community Emergency Plans	4
2.1	Organizational Chart of Emergency Plans & Agencies	5
3.0	Wholistic Approach	6
4.0	Pandemic Emergency Control Group	7
4.1	Pandemic Control Centre	8
4.2	Pandemic Emergency Operations Centre	8
5.0	Pre- Pandemic Period	9
5.2	Pandemic & Local Outbreak Period	10
5.3	Post- Pandemic Period	11
5.4	Severity Index and Interventions	12
6.0	Designated Flu Assessment Centers	13
6.1	Alternative Health Care Centers	13
7.0	Mass Immunization	14
7.1	Management of Mass Fatalities	14
8.0	Pandemic Plans for Community Essential Services	15

## 1.0 Preamble

As predicted by our traditional and western health experts, it is now a matter of when the next worldwide Influenza Pandemic will occur. Based on the recent 1<sup>st</sup> wave of the H1N1 Flu, the experts predict that another wave of the H1N1 Flu will occur sometime during the fall and winter of 2009 / 2010. In preparation for the predicted pandemic, our local public health care providers implemented various pandemic awareness plans and strategies throughout the past 2 years. During the summer of 2009, the community and health sector of Moose Factory was tested by six (6) laboratory confirmed cases of the H1N1Flu. A pandemic influenza outbreak was declared by the health authorities and this declaration activated local and regional emergency plans for the H1N1Flu. As a result of the preparedness work performed by the community frontline health workers, support and cooperation from the whole community, especially those with confirmed cases, there were no hospitalizations, serious illnesses or fatalities.

This short-term H1N1 Flu crisis put our community public health system, health care facility system, emergency health plans, leadership skills, and home health practices to the test. As well, and as equally important, this community health crisis tested our spiritual, mental, emotional and physical wellness. And, this health crisis directed all community members, businesses, schools, employers, etc., to get better prepared for the coming Influenza Pandemic.

The next wave of the H1N1 Flu is expected to be more severe in terms of hospitalizations, fatalities, and extensive social disruption. In an effort to enhance our local emergency preparedness and response system, our local governing authorities will adopt this Community Emergency Pandemic Plan that is designed specifically for the coming H1N1 flu.

This Community Emergency Pandemic Plan is intended to be used as a mechanism to guide the local emergency pandemic control group to make decisions for appropriate action. This Plan is intended to work in harmony with other local and regional emergency plans responding to an Influenza Pandemic in Moose Factory.

Like most community emergency plans, this plan is not a perfect plan. When the time comes, this plan will serve as a valuable guide for the decision makers. And, in order for this plan to meet or exceed its objectives, we will need to support it with our best available knowledge, community ownership, good judgment, commitment to on-going planning, community spirit, spiritual guidance, and strong leadership.

### 1.1 Purpose of the Plan

To provide an efficient and coordinated community preparedness and response emergency plan for a Pandemic Influenza

### 1.2 Objectives

- 1) To minimize death, illness and social disruption in our community
- 2) To prevent and control the spread of Influenza in our community
- 3) To make all community members owners of the plan and members of the response team
- 4) To include spiritual beliefs and practices for a wholistic approach
- 5) To provide the best possible coordinated response to an Influenza Pandemic

### 1.3 Definitions

Ref #	Term	Definition
1	Community	All community members, businesses and organizations
2	Local Governing Authorities	Elected officials with legal governing authority: <b>a)</b> Chief & Council, Moose Cree First Nation, <b>b)</b> Chairman & Directors, Local Services Board of Moose Factory, <b>c)</b> Chief & Council, Cree Nation Council of MoCreebec
3	Public Health Services	<b>a)</b> MCFN Health Department <b>b)</b> MCFN Health Centre <b>c)</b> MoCreebec Health Services
4	Schools	<b>a)</b> Ministik School, <b>b)</b> Delores D. Echum Composite School, <b>c)</b> MF Academy of Christian Education, <b>d)</b> Local Day Care Centres
5	EPR Centre	Emergency Preparedness & Response Centre
6	Community Pandemic Emergency Control Group	A team of community representatives tasked with preparedness and response to an Influenza pandemic in Moose Factory.
7	Flu Assessment Centres	A local facility that will be established to conduct influenza like illness surveillance
8	Alternative Health Care Centre (s)	A local facility may be established to provide patient care if the local hospital is full and no beds available for patient care.
9		

## 2.0 Local Community Emergency Plans

Currently, Moose Factory has a Community Emergency Plan [Plan # 1 below] that is designed to respond to all types of emergencies. In preparation for the H1N1 Flu, a Community Emergency Pandemic Plan (plan # 2 below) is required. And, in preparation for the H1N1 Flu, Moose Cree First Nation's Health Centre developed a Contingency Plan (plan # 3 below) that is designed to guide the local health care providers before, during and after a pandemic. The chart below provides a brief outline of each plan and in the event of an Influenza Pandemic, all three plans will need to be activated and need to work together.

### **Plan # 1** **Moose Factory Island Community Emergency Plan (MFICEP)**

#### **Developed for Community Emergencies & Response.**

Purpose: *To provide a prompt and coordinated response to all types of emergencies affecting Moose Factory.*

**Coordinator - Leonard Kapashesit**  
Emergency Measures Coordinator

#### **Emergency Control Group**

- ⇒ Chief Norm Hardisty, Moose Cree
- ⇒ Chris Alisappi, Fire Chief
- ⇒ Abel Wapachee, Public Works
- ⇒ Norma McComb, Social Services
- ⇒ Const. Peter Gagnon, NAPS
- ⇒ Derrick Gourley, Medical Public Health
- ⇒ Allen Sailors, MCFN Health Services
- ⇒ Victor Linklater, Communications
- ⇒ Patricia Wapachee, Information Officer

### **Plan # 2** **Community Emergency Pandemic Plan (CEPP)**

#### **Developed for Community H1N1 Flu Emergency**

Purpose: *To provide the community and local governing authorities of Moose Factory with a plan that provides a coordinated response to the next wave of the H1N1 Flu.*

**Coordinator - Allan Sailors**  
Director of Health  
**Emergency Control Group**

- ⇒ Tom McLeod; Public Health
- ⇒ Doug Cheechoo, Communications
- ⇒ Norma McComb, Social Services
- ⇒ Abel Wapachee, Public Works
- ⇒ Kim McComb, WGH
- ⇒ Fred Hunter, MCFN
- ⇒ George Small, MoCreebec
- ⇒ Allan Jolly, Local Services Board
- ⇒ Leonard Kapashesit, Deputy Fire Chief

### **Plan # 3** **Health Centre Pandemic Influenza Contingency Plan (HCPICP)**

#### **Developed for Health Care Providers**

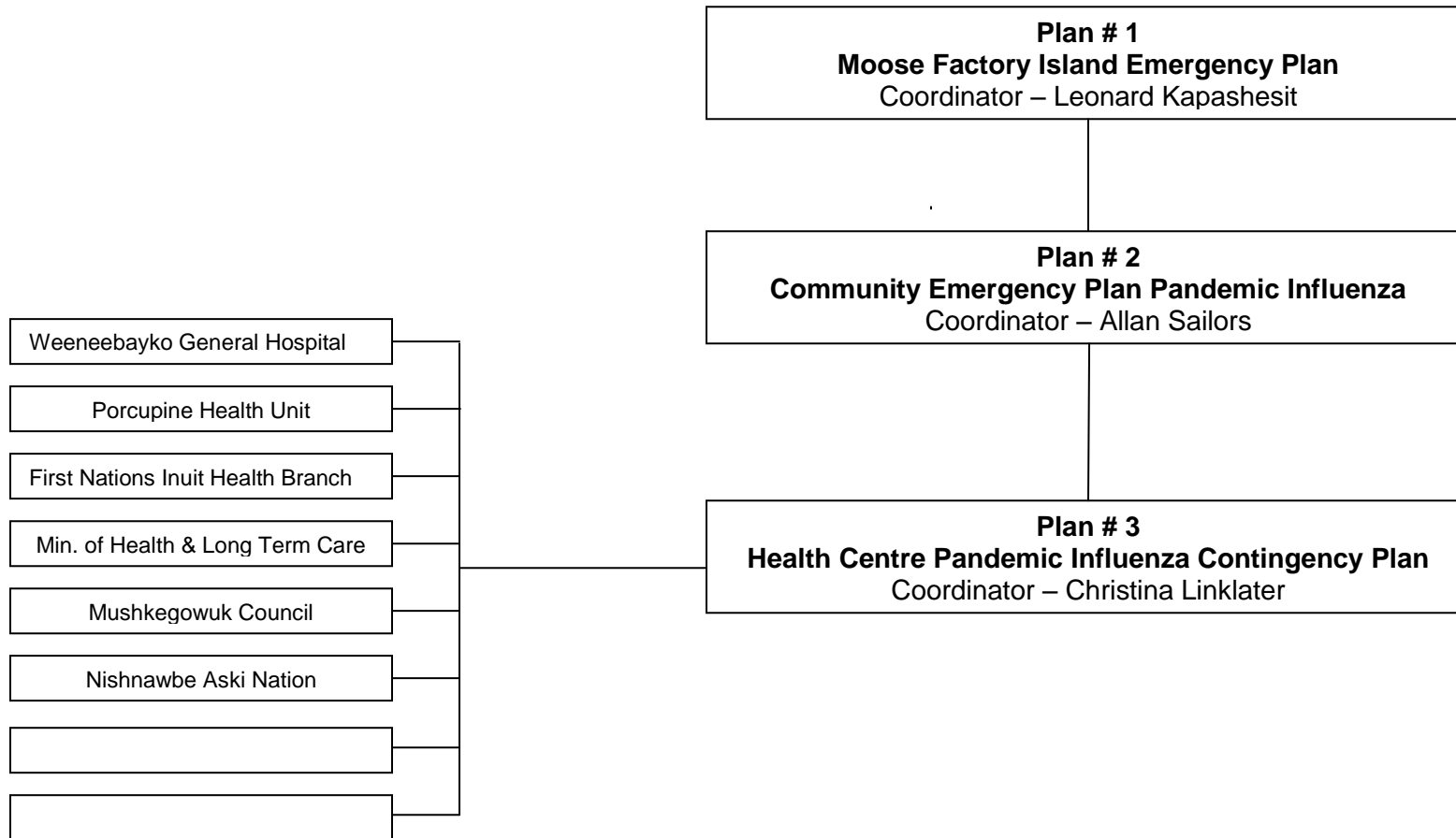
Purpose: *To provide an efficient coordinated emergency public health response to an influenza outbreak in our community.*

**Coordinator - Christina Linklater**  
Community Health Coordinator

#### **Emergency Operations Team**

- ⇒ Dr. Green, Medical Health Officer
- ⇒ Dr. Marilyn Cooke, Chief of Staff, WHA
- ⇒ Dr. \_\_\_\_\_, Zone Nursing Officer
- ⇒ Tom McLeod, Public Health Centre
- ⇒ Kim McComb, Infection Control, WHA

## 2.1 Organizational Chart of Local & Regional Emergency Plans & Agencies



### **3.0 Wholistic Approach**

From our experience of living in this community and the lifestyles we enjoy, we know that addressing the health and wellness of our community in a wholistic manner is proving to be meaningful and effective. To enhance our community effort to meet the objectives of this pandemic influenza plan, the community health emergency preparedness and response plans recognize the important roles of community religious/spiritual organizations and the land as a therapeutic milieu in addressing the wholistic health needs of our community members.

#### The Role of Native Traditional Spirituality:

Native traditional spirituality addresses the mental, physical, emotional and spiritual health of the person who practices and believes in it. Within our community health emergency preparedness and response plans, we need to recognize and include the provision of spiritual support, traditional ceremonies and medicines to those who seek such services.

Local traditional spirituality practitioners and people who follow the traditional spiritual customs are encouraged to provide healing circles and ceremonies. Where needed and subject to availability, the local authorities may provide required resources to provide this traditional service. *(As an interim guideline, the MCFN Health Department's traditional healing program/services will be used).*

#### The Role of Religious Organizations:

To enhance the community effort to meet the pandemic influenza plan, there is a need for the local religious congregations to provide spiritual support to the community in dealing with an outbreak.

#### The Role of the Land in Healing:

The land has always been the healthiest environment for our families. During an outbreak of influenza, community members may consider retreating to their hunting camps as a means of isolating themselves from the virus. For members of the MCFN that qualify for the Harvesters Program, funds may be available for this purpose.

The decision to retreat to camps is a decision the family makes and they should be prepared to stay at their camp for an extended period of time.

#### 4.0 Pandemic Emergency Control Group

Sector	Director	Alternate(s) & Support	Summary of Main Responsibilities
Pandemic Influenza Emergency Operations	⇒ Allan Sailors	<ul style="list-style-type: none"> <li>☛ Leonard Kapashesit</li> <li>☛ Health Department Staff</li> </ul>	<ul style="list-style-type: none"> <li>- Coordinate the community pandemic influenza emergency operations</li> <li>- Collaborate with external health authorities</li> <li>- Conduct regular pandemic emergency management meetings</li> </ul>
Public Health Services	⇒ Christina Linklater	<ul style="list-style-type: none"> <li>☛ Cheryl Moore</li> <li>☛ Health Centre Staff</li> </ul>	<ul style="list-style-type: none"> <li>- Administer the community public health services as directed by the Health Center's Emergency Pandemic Influenza Contingency Plan i.e. Surveillance, Prevention, Intervention, Immunizations, etc.</li> </ul>
Infection Control	⇒ Kim McComb	☛ _____	
Communications	⇒ Doug Cheechoo	☛ _____	<ul style="list-style-type: none"> <li>- Coordinate and manage the communications sector; provide timely updates and notices through radio, TV, website, mailbox, newsletter, etc.</li> </ul>
Social Services	⇒ Norma McComb	<ul style="list-style-type: none"> <li>☛ MoCreebec Rep</li> <li>☛ Social Services Staff</li> </ul>	<ul style="list-style-type: none"> <li>- To developed and posted</li> </ul>
Public Works	⇒ Abel Wapachee	<ul style="list-style-type: none"> <li>☛ Lawrence Weistche</li> <li>☛ Public Works Staff</li> </ul>	<ul style="list-style-type: none"> <li>- Provide transportation and other related public works services for all operations</li> </ul>
Moose Cree Administration Office	⇒ Peter Wesley	<ul style="list-style-type: none"> <li>☛ Fred Hunter</li> <li>☛ MCFN Staff</li> </ul>	<ul style="list-style-type: none"> <li>- Represent the Chief &amp; Council</li> <li>- Support overall community emergency operations</li> <li>- As required, address community</li> <li>- As required, provide additional resources</li> </ul>
MoCreebec Administration	⇒ George Small	<ul style="list-style-type: none"> <li>☛ _____</li> <li>☛ MoCreebec Staff</li> </ul>	<ul style="list-style-type: none"> <li>- Represent the Chief &amp; Council</li> <li>- Support overall community emergency operations</li> <li>- Coordinate tasks in area of jurisdiction</li> <li>- As required, address community</li> <li>- As required, provide additional resources</li> </ul>
Local Services Board Administration	⇒ Allan Jolly	<ul style="list-style-type: none"> <li>☛ _____</li> <li>☛ LSB Directors</li> </ul>	<ul style="list-style-type: none"> <li>- Represent the LSB area</li> <li>- Support overall community emergency operations</li> <li>- Coordinate tasks in area of jurisdiction</li> <li>- As required, provide additional resources</li> </ul>
Community Emergency Plan	⇒ Leonard Kapashesit	<ul style="list-style-type: none"> <li>☛ Mike Delaney</li> <li>☛ Emergency Control Group</li> </ul>	<ul style="list-style-type: none"> <li>Activate &amp; Coordinate MF Island Emergency Plan</li> </ul>

#### **4.1 Pandemic Control Centre**

The community emergency Pandemic Control Centre will be located at the EPR Centre. Under the lead coordination of the Moose Cree Health Centre, the community pandemic public health services will be administered from this office.

Address: 911 Achmist Street, Moose Factory, ON. P0L 1W0  
Business Phone: 705 658 4100  
Emergency Phone: 705 658 6911  
Fax: 705 658 4102  
Email:

#### **4.2 Pandemic Emergency Operations Centre [PEOC]**

The PEOC will be located in the EPR Conference Centre.

The Pandemic Emergency Control Group will conduct their emergency operations out of the main EPR conference centre.

The EOC will be equipped with the following:

- a) Phone, fax, internet
- b) 24/7 emergency phone (s)
- c) Video Conferencing
- d) Medical supplies
- e) Cable TV
- f)

## 5.0 PRE – PANDEMIC PERIOD

*During this period the community of Moose Factory, the Pandemic Emergency Control Group and Public Health Services will work together at preparing for the second wave of the H1N1 Flu.*

Community (Homes, Businesses & Organizations)	Pandemic Emergency Control Group & Public Health Services
<ol style="list-style-type: none"> <li>1) Continue to do your part in preventing the spread of the flu in our community</li> <li>2) Develop a Home Emergency Plan which should include;               <ul style="list-style-type: none"> <li>- Plan for sick family member(s) to stay home</li> <li>- Plan for everyone to stay home if one member becomes ill</li> <li>- Plan for school and childcare closures</li> <li>- Collect emergency contact information i.e. phone #</li> <li>- Stock up on basic food supplies</li> </ul> </li> <li>3) Provide/offer spiritual ceremonies and medicines</li> <li>4) Plan to stay at your camp for an extended period of time.</li> <li>5) Plan for the closures of local stores [Northern &amp; GGs]</li> <li>6) Be prepared to cancel meetings, travel, events, etc.</li> <li>7) Employers to develop emergency plans for their workplace.</li> <li>8) Be prepared to be quarantined / isolated for an extended period of time.</li> </ol>	<ol style="list-style-type: none"> <li>1) Perform duties and responsibilities as outlined in the Health Center's Pandemic Influenza Contingency Plan</li> <li>2) Vaccines: Prepare a detailed Community Mass Immunization Plan (receive, store and administer)</li> <li>3) Ant- virals: Anti-virals will be administered as directed by the Weeneebayko Health Ahtuskaywin</li> <li>4) In consultation with the spiritual leaders, coordinate the provision of traditional ceremonies, gatherings and medicines</li> <li>5) Awareness: Continue on with providing a Pandemic Influenza Awareness Campaign</li> <li>6) Collaborate with other Pandemic Planners</li> <li>7) Establish and Operate Moose Factory's Pandemic Influenza Control and Operations Centre.</li> </ol>

## 5.1 PANDEMIC & LOCAL OUTBREAK PERIOD

*At this stage, the community will be put on full alert; all efforts will be focused on providing health care for people that are ill and working to minimize the spread of the flu, and to reduce social disruption in our community.*

Community (Homes, Businesses & Organizations)	Pandemic Emergency Control Group & Public Health Services
<ol style="list-style-type: none"> <li>1) Community members with flu symptoms, <u>go to the Designated Health Care Centre (s) immediately for medical treatment and stay home.</u></li> <li>2) Conduct family/staff meetings to review Emergency Pandemic Flu plans</li> <li>3) Continue to provide/offer spiritual ceremonies and medicines</li> <li>4) Plan to stay at your camp for an extended period of time.</li> <li>5) Plan for the closures of local stores</li> <li>6) Be prepared to cancel meetings, travel, events, etc.</li> <li>7) Activate organizational/business emergency pandemic influenza plans</li> </ol>	<ol style="list-style-type: none"> <li>1) Request activation of the Community Emergency Plan [CEP]</li> <li>2) Administer responsibilities as outlined in the Health Center's Pandemic Influenza Contingency Plan</li> <li>3) In accordance with the procedures in the CEP for declaring an emergency, and as directed by the Pandemic Emergency Control Team, request the Chief Community Official or his designate to "Declare An Emergency".</li> <li>4) Monitor absenteeism in schools and workplaces.</li> <li>5) Advise local vaccination centers to prepare for operation</li> <li>6) Provide daily community dates</li> <li>7) In coordination with the spiritual leaders, provide traditional ceremonies, gatherings and medicines</li> <li>8) Awareness: Continue on with providing a Pandemic Influenza Awareness Campaign</li> <li>9) Collaborate with other Pandemic Planners</li> <li>10) Establish and Operate Moose Factory's Pandemic Influenza Control and Operations Centre.</li> </ol>

## 5.2 POST- PANDEMIC PERIOD

*When the Influenza Pandemic Period is declared over, all Emergency Plans and Operations will be evaluated to identify weaknesses and strengths.*

### Community (Homes, Businesses & Organizations)

- 1) Evaluate Pandemic Emergency Plans
- 2)
- 3)

### Pandemic Emergency Control Group & Public Health Services

- 1) Perform post pandemic duties and responsibilities as outlined in the Health Center's Pandemic Influenza Contingency Plan
- 2) Evaluate the Community Emergency Plan for Pandemic Influenza
- 3)
- 4)

**5.3 SEVERITY INDEX AND INTERVENTIONS (to be used as a guide only)**  
**PANDEMIC PERIOD & LOCAL OUTBREAK OF INFLUENZA**

<b>Category 1</b> <b>'MILD ↔ MODERATE' Pandemic</b>	<b>Category 2</b> <b>'MODERATE ↔ SEVERE' Pandemic</b>	<b>Category 3</b> <b>'SEVERE' Pandemic</b>
⇒ 0 - 10 Confirmed lab cases ⇒ All cases isolated at home ⇒ 10% Influenza Like Illness Symptoms ⇒ No Hospitalization	⇒ 10 + Confirmed lab cases ⇒ 0 - 3 Hospitalizations ⇒ __% Influenza Like Illness Symptoms ⇒	⇒ 5 or more hospitalizations ⇒ 1 or more Fatalities ⇨ ⇨
<b>Interventions</b> <b>[Precautionary Measures]</b>	<b>Interventions</b> <b>[Precautionary Measures]</b>	<b>Interventions</b> <b>[Precautionary Measures]</b>
1] Chief Medical Officer to Declare 'Outbreak of Local Influenza Pandemic'		1] Chief Community Official to declare 'State of Health Emergency'
2] Voluntary isolation by confirmed cases	2] Quarantine confirmed cases family/household	2] Quarantine confirmed cases/family/household
3] Increase surveillance on affected families & community	3] Closely monitor confirmed cases and family	3] Closely monitor confirmed cases and family
4] Administer anti virals as prescribed in the Health Centre Pandemic Plan	4] Administer anti virals	4] Administer anti virals
5] Closely monitor schools and workplaces for absenteeism	5] Seriously consider closing all schools	5] Close all schools
6] Issue 1 <sup>st</sup> Travel Advisory	6] Defer unnecessary travel	6] No travel in or out of community
7] Reinforce education/infection prevention and control measures	7] Reinforce education/infection prevention and control measures	7] Reinforce education/infection prevention and control measures
8] Implement Public Facilities Sign-In procedure	8] Permit essential gatherings/events only and postpone / cancel all other public events	8] Postpone / cancel all public events
9] Provide daily public updates	9] Provide daily public updates	9] Provide daily public updates
10] No visitors at hospital with ILI symptoms	10] Consider using hunting camps for isolation	

**Note: The epidemiology of the virus will dictate what category, intervention and decisions are required.**

## **6.0 Designated Flu Assessment Center (s)**

If required and if staff are available, two (2) Flu Assessment Centers will be established to conduct disease surveillance. Disease surveillance will be conducted in accordance with provincial protocols.

The Public Health Services will be responsible for the overall administration of the Flu Assessment Centers.

The following local facilities have been designated as Flu Assessment Centers;

- a) EPR Centre
- b) Ministik School [658 4535]

Alternates:

- a) Delores D. Echum Composite School [658 5610]
- b) Mocrebec Office (to be confirmed)

## **6.1 Alternative Health Care Center (s)**

In the event the Weenebayko General Hospital reaches full capacity and has no beds for patients, the following local facilities will be transformed into an Alternative Health Care Center;

- a) Cree Village Eco-Lodge (to be confirmed)
- b)

The Public Health Services, Home and Community Care and Social Services will be responsible for the management of the alternative health care sites.

Local community members with a background in health care, food preparation and security will be encouraged to volunteer their service to work at these alternate health care sites.

## **7.0 Mass Immunization Plan – Vaccine for H1N1 Influenza**

Once the H1N1 Vaccine is available in our community, vaccination clinics will be provided to those who want the vaccination. Public notices will be posted to keep the community informed on vaccinations.

Vaccination Centers:

- 1) EPR Centre
- 2) Ministik School

## **7.1 Management of Mass Fatalities**

In preparation for additional deaths caused by an influenza pandemic, a Mass Fatalities Plan will need to be developed by the local agencies/services normally involved with deaths in the community. The Mass Fatalities Plan will need to address the following areas;

- a) Pronouncing Death
- b) Body Wrapped
- c) Transport to Morgue (hospital or temporary morgue)
- d) Funeral & Burial

Local agencies/services that are responsible for this plan include;

- a) Local doctor/coroner
- b) Medical Officer of Health (local)
- c) Social Services
- d) Public Works
- e) Local religious groups

## **8.0 Pandemic Plans for Community Essential Services**

The following local community services are classified as 'Essential' and are required to develop an internal emergency pandemic operations plan. The main purpose of the Community Essential Services is to ensure a minimum level of service is maintained and provided during a Pandemic.

- Nishnawbe Aski Police Services
- Moose Factory Island Fire & Rescue
- James Bay Ambulance Services
- Moose Factory Public Health Centre
- MCFN Health Services
- MCFN Public Works (Water Treatment Plant, Garbage, Bussing)
- MCFN Social Services Department
- MCFN Finance Department
- MCFN Administration & Communications Department
- Northern Stores