



# Land Entitlement Negotiation

# INFORMATION SESSION

This session is intended to provide Moose Cree First Nation members with information on the Moose Cree First Nation Land Entitlement Negotiation.

## What is the Land Entitlement Negotiation Claim about?

Moose Cree First Nation has demonstrated that the First Nation was shortchanged 12.65 square miles of land when Treaty No. 9 was signed in 1905. We must now identify land options that we are interested in securing, and identify the advantages and disadvantages of each option. You will help us decide which options best suit our needs both now and in the future.



### Moose Factory Island Land Parcel Workshop

**JULY 31, 2014**

MCEA Classroom  
6:30 P.M.

### Land Entitlement Negotiations Information Session

**AUGUST 6, 2014**

EPR Centre  
12:00 P.M. to 3:00 P.M.  
Lunch will be served.

### Land Entitlement Negotiations Information Session

**AUGUST 7, 2014**

TCJMC Community Hall  
12:00 P.M. to 3:00 P.M.  
Lunch will be served.

#### For More Information, please contact:

Brenda Sutherland, Executive Services Coordinator  
(705) 658-4619 ext.313 or [brenda.sutherland@moosecree.com](mailto:brenda.sutherland@moosecree.com)



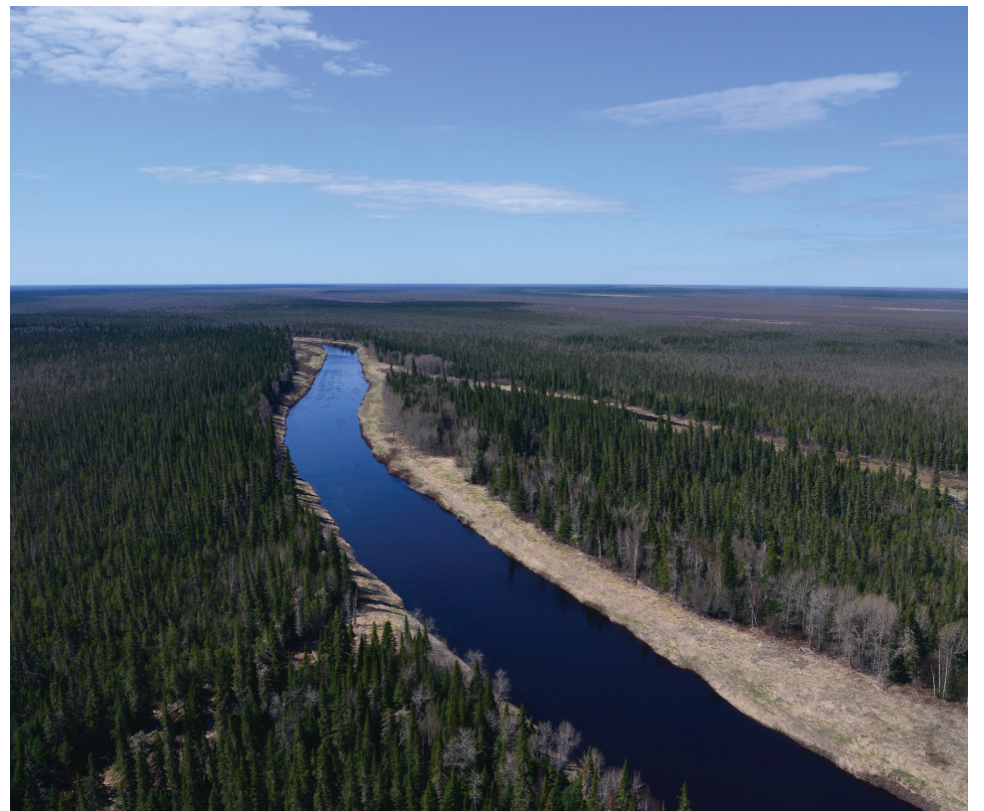
## Land Entitlement Negotiation

# INFORMATION SESSION

This session is intended to provide Moose Cree First Nation members with information on the Moose Cree First Nation Land Entitlement Negotiation

### What is the MCFN Land Entitlement Negotiation Claim about?

Moose Cree First Nation has demonstrated that the First Nation was shortchanged 12.65 square miles of land when Treaty No. 9 was signed in 1905. We must now identify land options that we are interested in securing, and identify the advantages and disadvantages of each option. You will help us decide which options best suit our needs both now and in the future.



### Out of Town Information Sessions

<b>August 19</b>	<b>Cochrane, ON</b>	<b>Inniew Friendship Centre</b> 6:30 P.M.   190 3rd Avenue
<b>August 20</b>	<b>Kapuskasing, ON</b>	<b>Kapuskasing Friendship Centre</b> 6:30 P.M.   41 Murdock Street
<b>August 21</b>	<b>Timmins, ON</b>	<b>Timmins Native Friendship Centre</b> 6:30 P.M.   179 Kirby Street
<b>August 25</b>	<b>North Bay, ON</b>	<b>North Bay Indian Friendship Centre</b> 6:30 P.M.   980 Cassels Street
<b>August 26</b>	<b>Sudbury, ON</b>	<b>Quality Inn, Senator Room</b> 6:30 P.M.   390 Elgin Street

For More Information, please contact:

Brenda Sutherland, Executive Services Coordinator  
(705) 658-4619 ext.313 or [brenda.sutherland@moosecree.com](mailto:brenda.sutherland@moosecree.com)